

ARM1500-50

MODULAR ROBORIGGER

+50t WLL SPREADER



The Roborigger ARM1500-50 is a load controlling system based on the ARM1500 load control module fitted with a 50t WLL spreader. Roboriggers add value to your project by increasing the lifting efficiency of the crane and its team by an average of 15%. This is achieved by allowing orientation to be done whilst the load is in transit. There is no need to attach and remove tag lines and the ability to work efficiently at higher wind speeds is greatly improved. Erection of steelwork at height can be done using one or two fewer personnel as you don't need personnel on tag lines to do the orientation and the structure can be lifted into its final position under wireless control of the personnel making up the connection. Roborigger has a payback greater than three times its cost.

Using Roborigger allows loads to be oriented and landed without the need for people to be in the vicinity. It also prevents loads from spinning and hitting structure which is a major cause of dropped objects and costly damage. The safety benefits are significant.

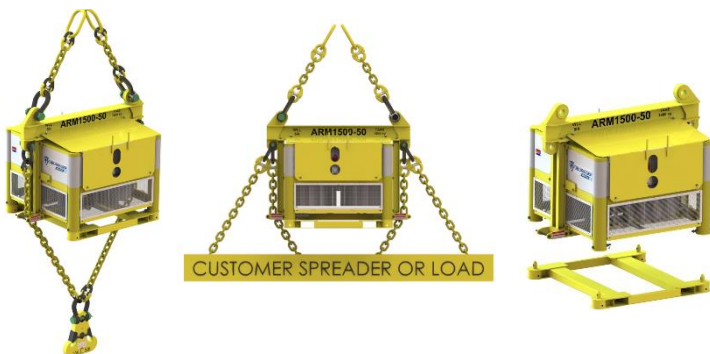
The ARM1500 module has sufficient capacity to control the orientation of a 40ft container in winds of 15kn (27km/hr) gusting to 20kn (36km/hr). The ability to control the load depends on the mass moment of inertia of the load and its windage.

The ARM1500-50 includes a lower support frame incorporating forklift pockets which can be left attached when in operation to allow easy set down or it can be removed for operation and the unit can be landed on the frame after use. For 24x7 operation, we include the battery pack in this frame and by using 2 battery pack frames that can be swapped in a few minutes, operations can continue around the clock. It is also possible to operate Roborigger continuously by providing a charging supply of 1.5 to 2.5kW through the 110VAC to 250VAC charging port. This can come from a generator below on a vacuum lift or magnetic lift spreader or from a cable supply via the crane boom.

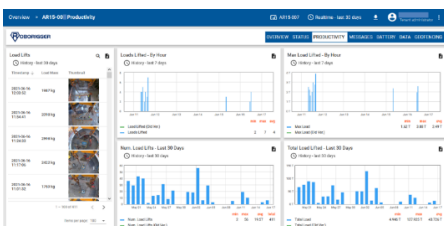
The ARM1500-50 normally includes a 50t rated 2 leg sling assembly for attachment to a ramshorn hook. The load is supported from the end of the spreader.

ROBORIGGER includes a video camera and load cell and is internet connected by Wi-Fi and 3g/4g so that all lifts are recorded on the internet database complete with date, time, location, weight, and a high-resolution image. Load ID can also be recorded. This gives the user the ability to track all loads lifted and to analyse performance and productivity.

LIFTING CONFIGURATION OPTIONS



Hook mode Spreader mode Removable transport base



Data is captured and saved to the internet database

KEY FEATURES:

- Integrated load cell
- Integrated IP camera capable of providing video feed and still pictures of load
- 3g/4g modem to provide internet connectivity
- Wi-Fi for transmission of video for use as crane camera or for remote monitoring
- Wireless remote using off the shelf 2.4 GHz, 433MHz or 900MHz crane controller
- 12 hour+ battery pack. Optional 24x7
- Onboard battery charger: input AC240V 15A
- Remote monitoring using ROBORIGGER IoT

SPECIFICATIONS:

WLL: 50 t (lift spreader capacity)
PROOF LOADING: 75 t
Module Size: 1.57 (W) x 1.76 (W) x 2.15m (H)
Operating temp: 0 to +55C
Weight: module 1,080 kg (without lift frame)
Weight: 1,900 kg including spreader
 Designed to AS1418 class U3 loading Q3
 Fatigue life 100,000 cycles spectrum Kp=1