

MAKING LIFTING OPERATIONS SAFER FOR PERSONNEL

ROBORIGGER is an automated lifting device which accurately rotates and holds loads in a specific orientation regardless of wind. No taglines are needed. It is a game changer for lifting safety as personnel no longer need to be in a position where they can be injured by lifted loads. **ROBORIGGER** boosts the productivity of crane operations by 10-30% and greatly extends the operating window for lifting loads with large windage. It also allows loads to be easily manoeuvred into tight locations without needing personnel to guide the load. It eliminates the risk of damage to the load or the surrounding structure. **ROBORIGGER** is ideal for use on construction tower cranes and mobile cranes.



AR10 and AR15

WLL: 10t (AR10) 15t (AR15)
 Size: 1.4m (D) x 1.8m (H)
 Weight: 620 kg (AR10) 850 kg (AR15)

Features

- 12-24 hours min. battery life
- Onboard charger - 240Vx10A. 9 hrs for full charge
- Wireless range 100-150m
- Remote control - 433Mhz or 2.4GHZ
- 2 remotes with handover capability
- Hook options -Trihook or wireless release
- Onboard load cell
- Internet camera – video and still
- 4g internet connectivity for online monitoring



ARM1500-20

WLL: 20t (lift frame capacity)
 Module size: 1.5 (W) x 1.5 (W) x 1.0m (H)
 with lift frame: 2.1 (W) x 1.5 (L) x 1.8 (H)
 Weight: 1,080 kg without lift frame
 1,730 kg including lift frame
 1,860 kg including lift frame and hook

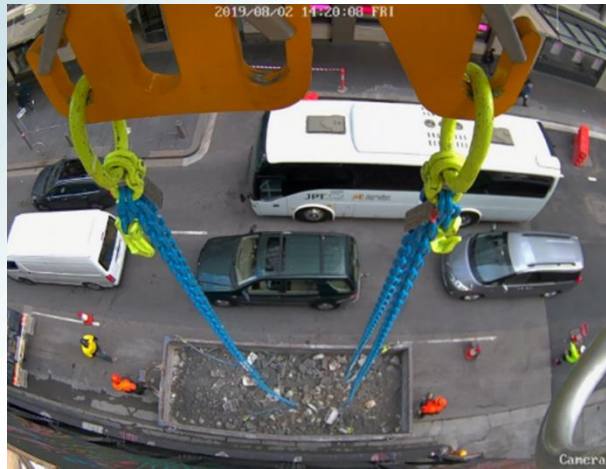
ARM1500-35

WLL: 35t (lift frame capacity)
 Module size: 1.5 (W) x 1.5 (W) x 1.0m (H)
 with lift frame: 2.1 (W) x 1.5 (L) x 2.3 (H)
 Weight: 1,080 kg without lift frame
 2,145 kg including lift frame
 2,345 kg including lift frame and hook

ARM1500-50 (future)

WLL: 50t (top spreader capacity)
 Module size: 1.5 (W) x 1.5 (W) x 1.0m (H)
 with lift frame: 2.1 (W) x 1.5 (L) x 1.8 (H)
 Weight: 1,080 kg without lift frame
 1,930 kg including lift frame
 2,060 kg including lift frame and hook

INDUSTRY APPLICATIONS



Features as for AR10/15 except for:

- Onboard charger - 240Vx15A. 9 hrs for full charge
- Hook options -Trihook or Wireless release hook on bottom spreader or torque bridle



CONSTRUCTION: ROBORIGGER improves safety by keeping loads away from workers and the public and improves efficiency by eliminating taglines and increasing the operating window for handling large windage loads.

INDUSTRIAL & RESOURCES: ROBORIGGER makes lifting and positioning of challenging and long loads such as piping, gantries, crane booms and wind turbine blades safe and easy. Automated release of rigging allows loads to be positioned and released remotely without personnel in the vicinity.

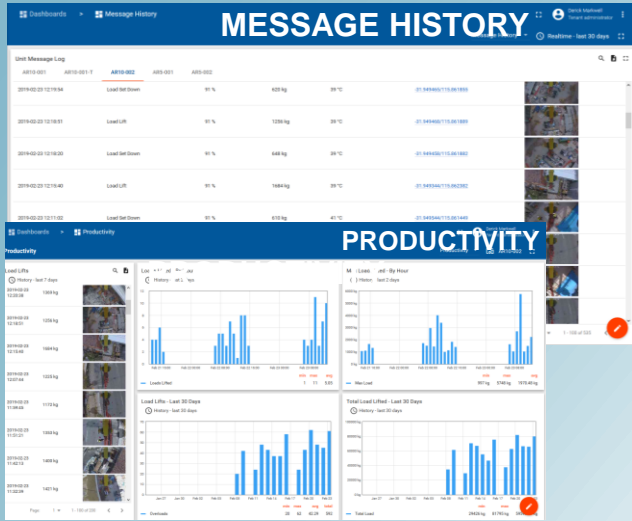
For more info, contact Derick Markwell:

Email: dmarkwell@roborigger.com.au

Phone: +61 8 9488 4500

www.roborigger.com.au

ROBORIGGER PRODUCTS



IoT APPLICATION

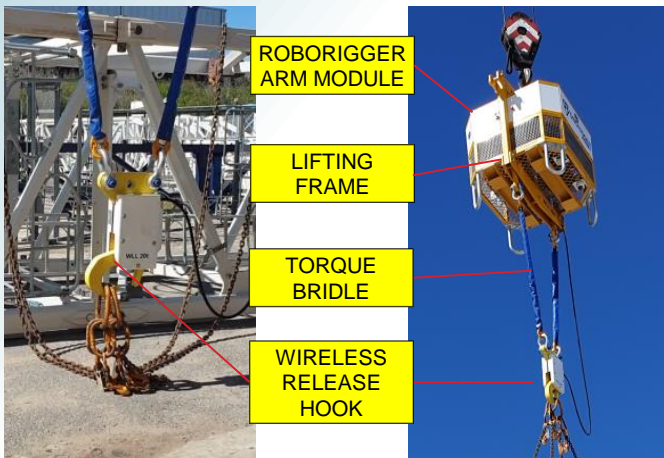
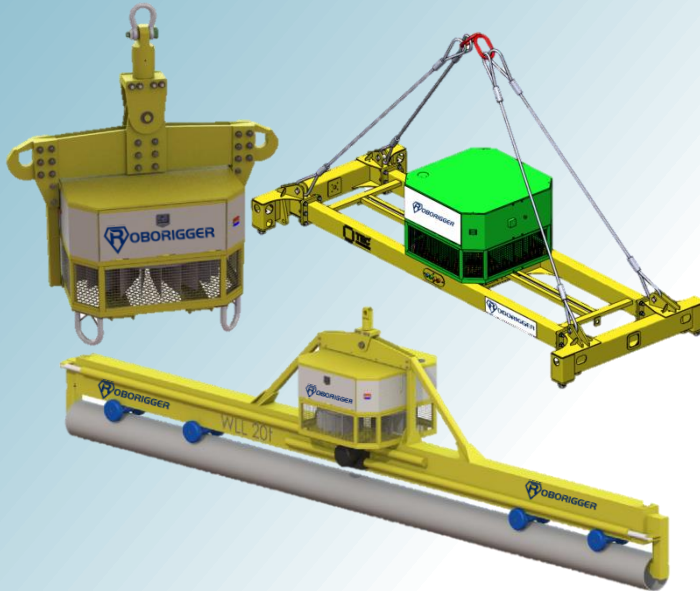
ROBORIGGER's cloud-based IoT customer platform records an extensive set of logistics and lifting information. The following data can be viewed in our web based application and is downloadable in database or Excel formats for more detailed analysis.

- Still images of every load, lift and setdown
- Location, time and date of each lifting operation, including the weight of the load
- Detailed statistics including lifts/hour, lifts/day and total load lifted
- Equipment diagnostic information
- Blackbox recording and notification of non-conforming events e.g. overload, shock, topple, etc.
- Onboard capability to identify loads by QR code, text recognition or RFID with suitable antenna

SPECIALISED SPREADER & LIFT FRAMES

ROBORIGGER ARM modules can be used in conjunction with specialised spreader and lift frames for the following applications:

- Container orientation system for 20ft and 40ft containers
- Line pipe handling and stacking
- Wind turbine blade installation
- Crane boom handling
- Large precast panel handling
- Lifting large equipment items in confined areas



HOOKS AND TORQUE BRIDLE

The **ROBORIGGER** Wireless Release Hook allows the operator to release the load remotely by wireless. The system has a dual command system requiring that 2 separate buttons are pressed in conjunction with sensing that the hook is unloaded before a release can be initiated. The hooks can also be located on the end of the sling sets or on the end of the torque bridle.

ROBORIGGER has spare power and control capability to operate other specialised lifting attachments.

For more info, contact Derick Markwell:

Email: dmarkwell@roborigger.com.au

Phone: +61 8 9488 4500

www.roborigger.com.au