

# LOAD28

## SkyCity Façade Panels Installation



### HIGHLIGHTS

#### Allowed management and installation of glass façade panels without taglines

Crane and access specialist [Load28](#) approached [Nobles](#), our South Australian service agent to assist with the management of glass façade panels during the installation on the upper floors of the SkyCity.

SkyCity is a part of the \$300 million [Adelaide Casino redevelopment project](#).

Roborigger AR10 (WLL 10t) was used and it allowed the tower crane and installation crew to pick up and control the panels in the wind without using taglines.

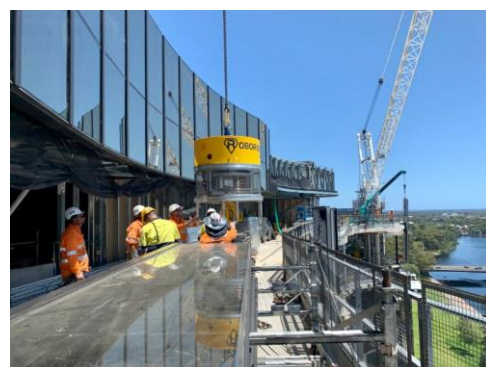
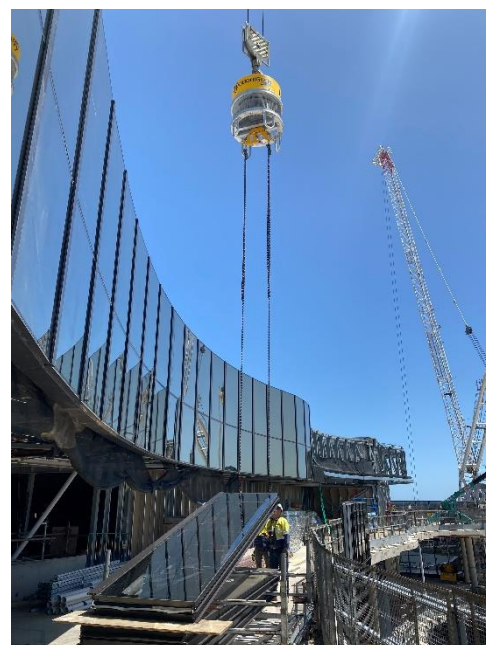
Roborigger was well-received by the crew, with the crew noting that the unit enhanced the safety and productivity on site.

—  
*“Using its stabilisation technology; Roborigger not only controlled the panel from twisting in the wind, but also controlled the ‘pendulum’ effect we often experience.*

*Using the remote control, the tower crane rigger was able to adjust the position of the panel as it came over the building to ensure it faced the correct way for install.*

*No more taglines getting stuck in structural steelwork!”*

- Marcus Rigney, Operations Manager, Load28



### PROJECT DESCRIPTION

The glass facade panels installation on the upper floors of the SkyCity where the \$300 million Adelaide Casino redevelopment is underway.

APPLICATION	: Management of glass façade panels during the installation on the upper floors of the SkyCity
CLIENT	: Load28
LOCATION	: SkyCity Project, Adelaide Casino, South Australia
DATE	: Feb 2020
ROBORIGGER MODEL	: AR10 (WLL 10t)