

HIGHLIGHTS

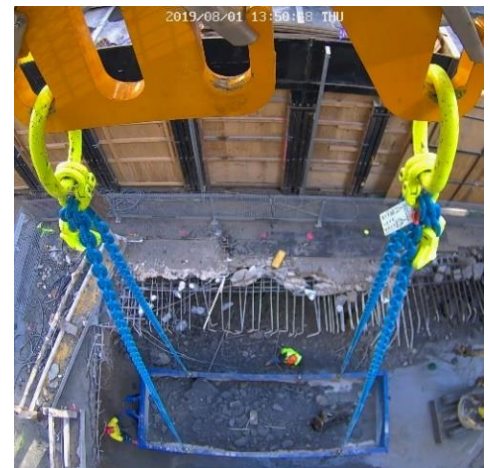
Allowed loading of 10 tonne skips with only one traffic lane blocked

When lifting and lowering long and heavy loads down to the narrow and busy King St loading zone, Roborigger kept the load in control and prevented it from swinging over the public space so that only one traffic lane needed to be closed. This minimised the disruption to the city traffic. Personnel controlling the load stood near where this photo was taken from, well clear of the load.



Allowed skip bins to be lowered through restricted openings without requiring personnel nearby to orient them

The ability to stabilise and control the load removed the need to use and attach taglines to the loads. This eliminated the probability of having taglines catching on structures which might cause the rubble to fall on the personnel or damage surrounding buildings. Personnel only approached the skip when it was landed.



PROJECT DESCRIPTION

388 George Street is an A-Grade commercial office building initially built in 1976. Multiplex contracted the use of a Roborigger AR10 for the demolition works being done to prepare for the refurbishment of the upmarket building. Roborigger was used to lift and unload 6m long skip bins filled with building rubble with loads up to 10 tonnes. Roborigger was later used for the steelwork erection on site.

APPLICATION	: Lifting and lowering of skip bins from a building demolition site
CLIENT	: Multiplex
LOCATION	: Sydney, Australia
DATE	: July 2019 to July 2020
ROBORIGGER MODEL	: AR10 (WLL 10 tonnes)